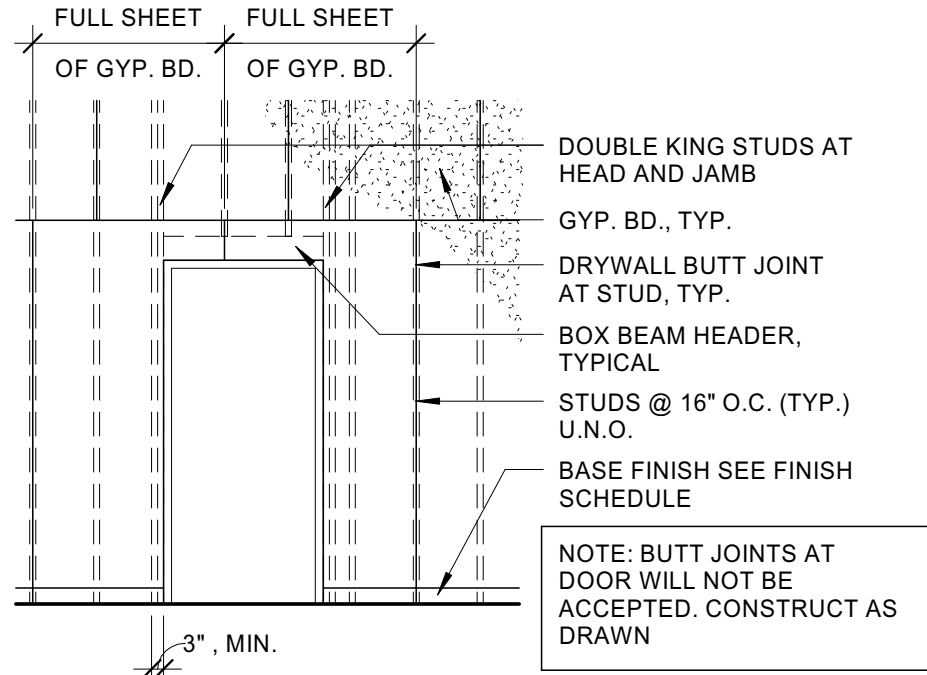


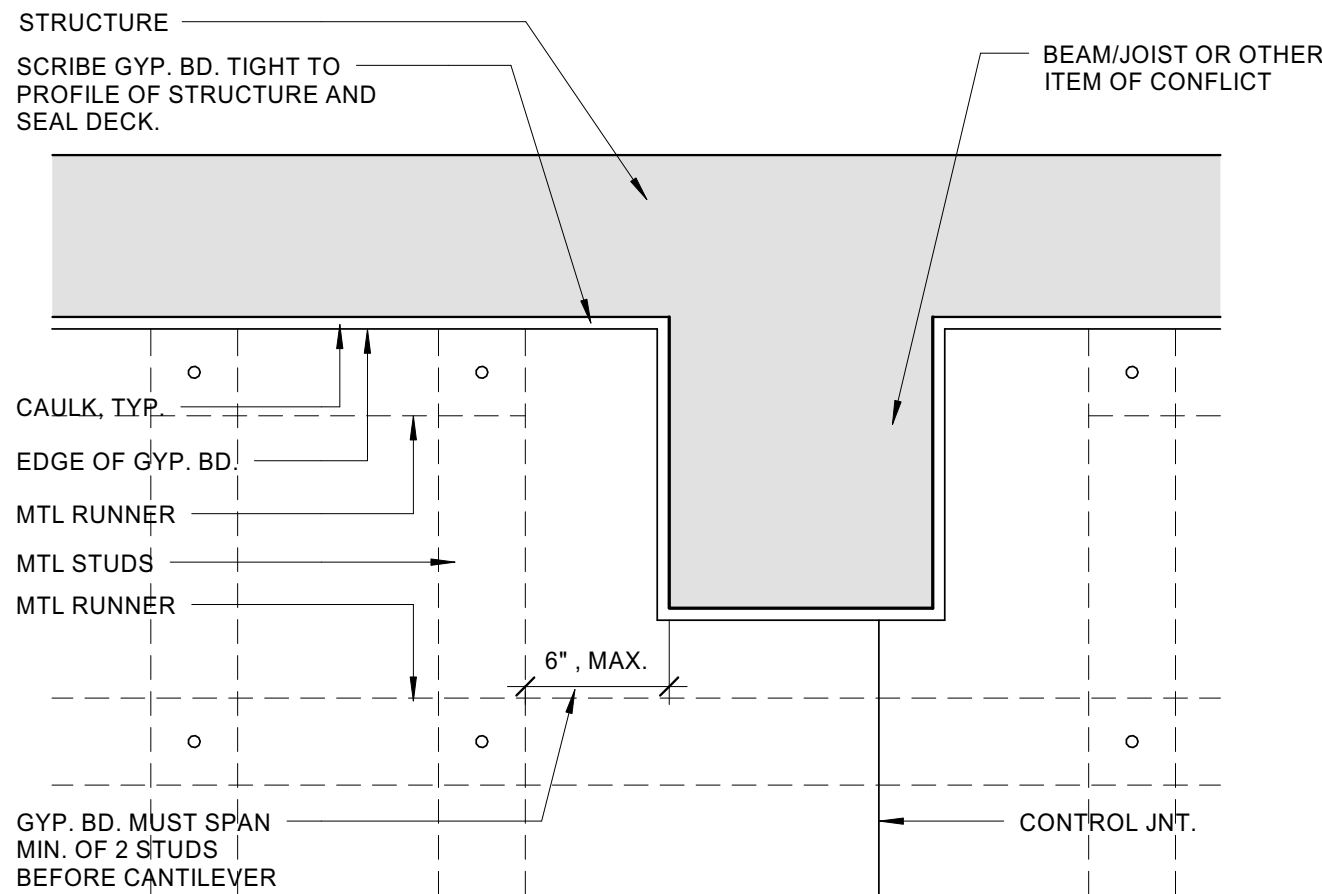


Date: 05/16/14



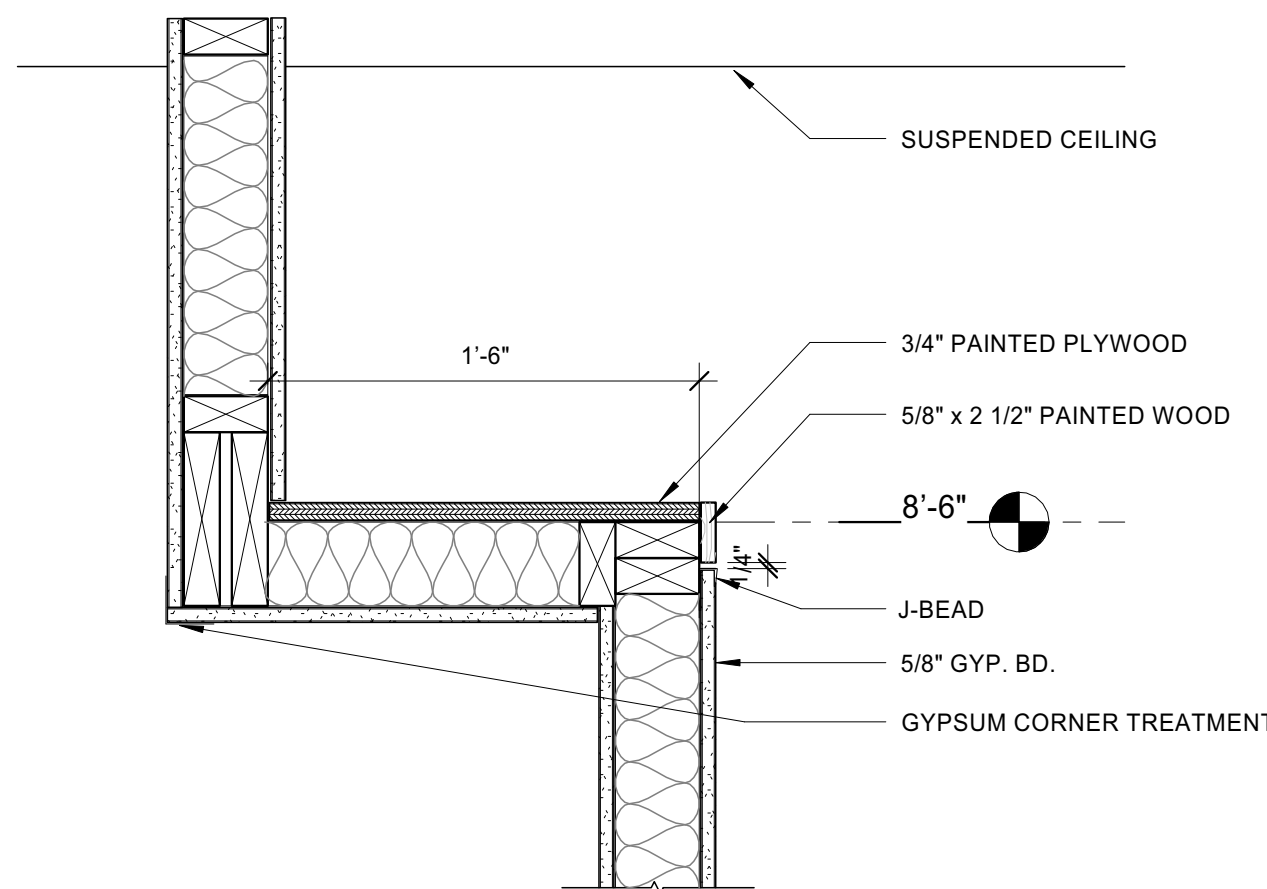
12 | PLAN DETAIL AT SOUND CRITICAL PARTITION

1/4" = 1'-0"



10 | PARTITION PERPENDICULAR TO OBSTRUCTION

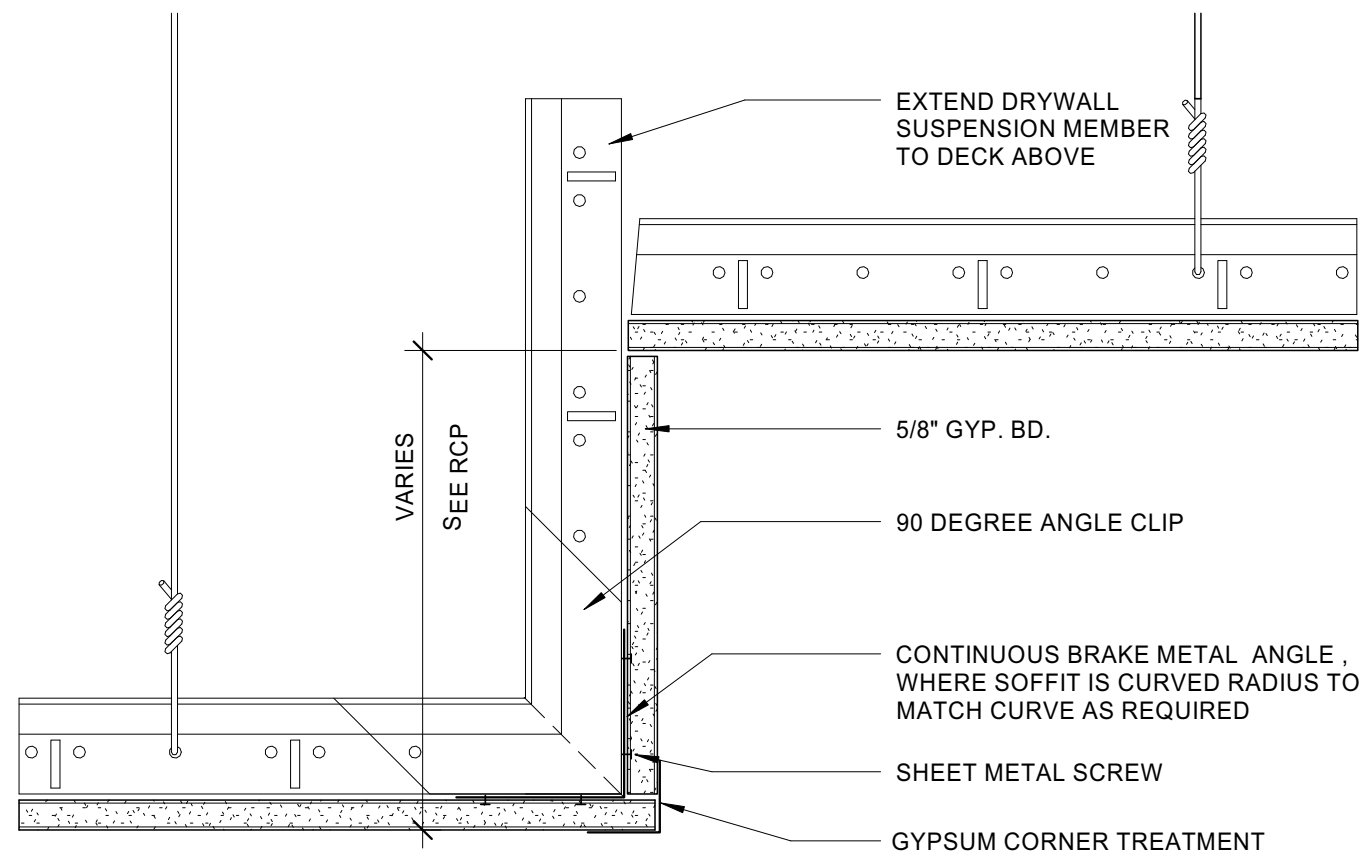
1 1/2" = 1'-0"



9 | SHELF DETAIL

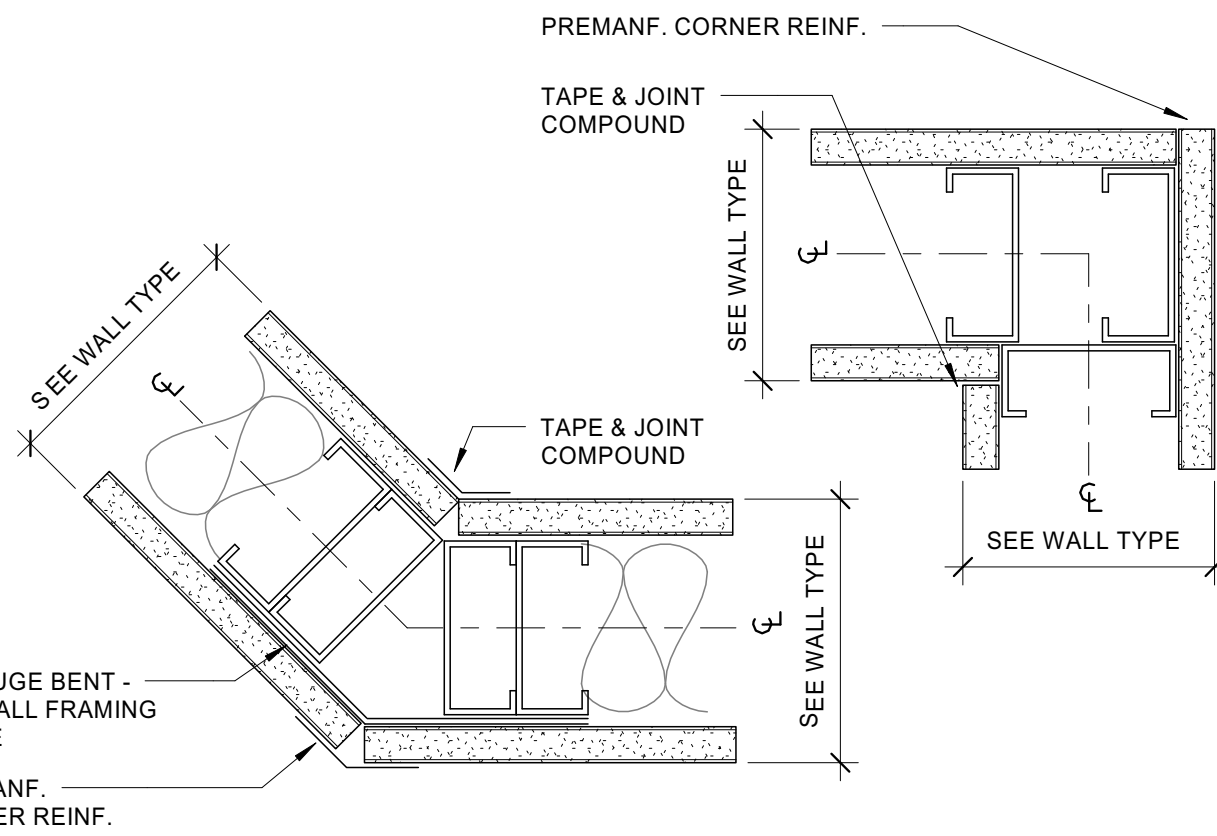
1 1/2" = 1'-0"

WALL HEAD/ FOOT AT DEMISING



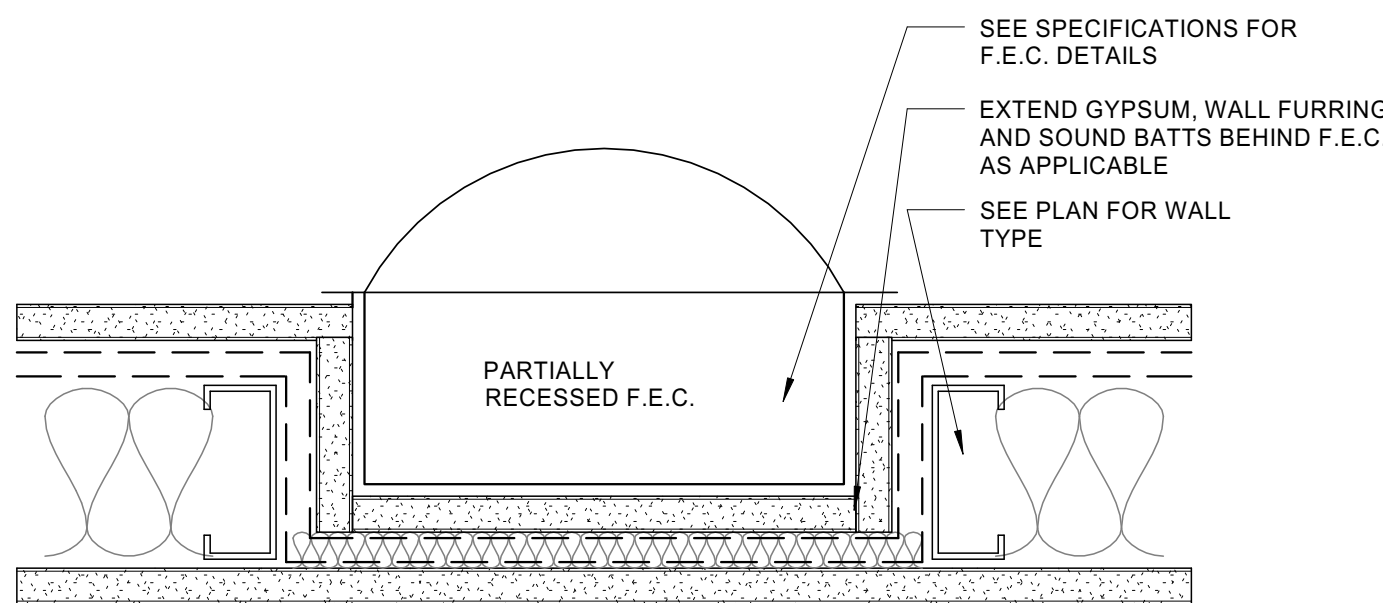
8 | BULKHEAD DETAIL

3" = 1'-0"



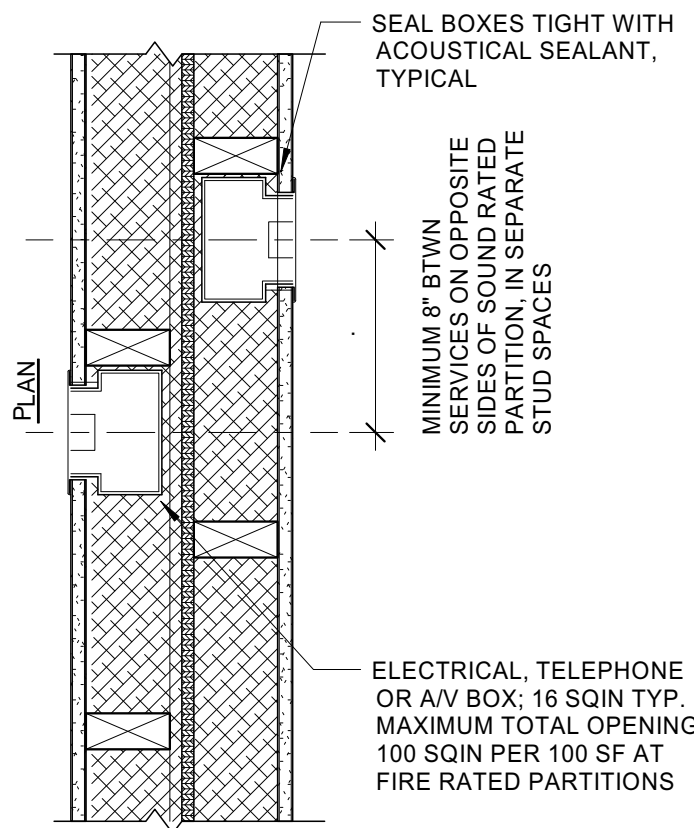
7 | TYPICAL CORNER DETAIL

3" = 1'-0"



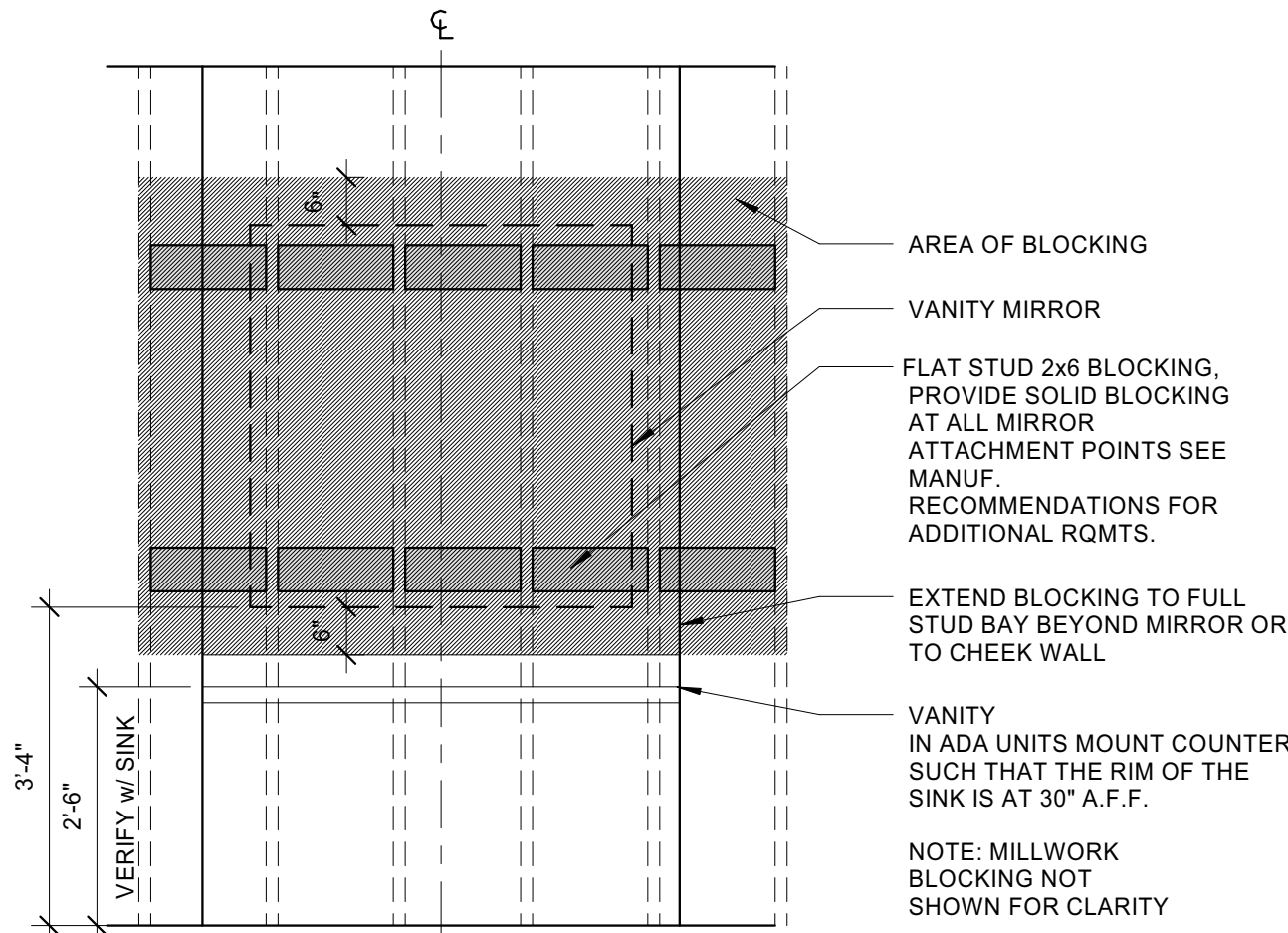
6 | RECESSED F.E.C. CABINET DETAIL

3" = 1'-0"



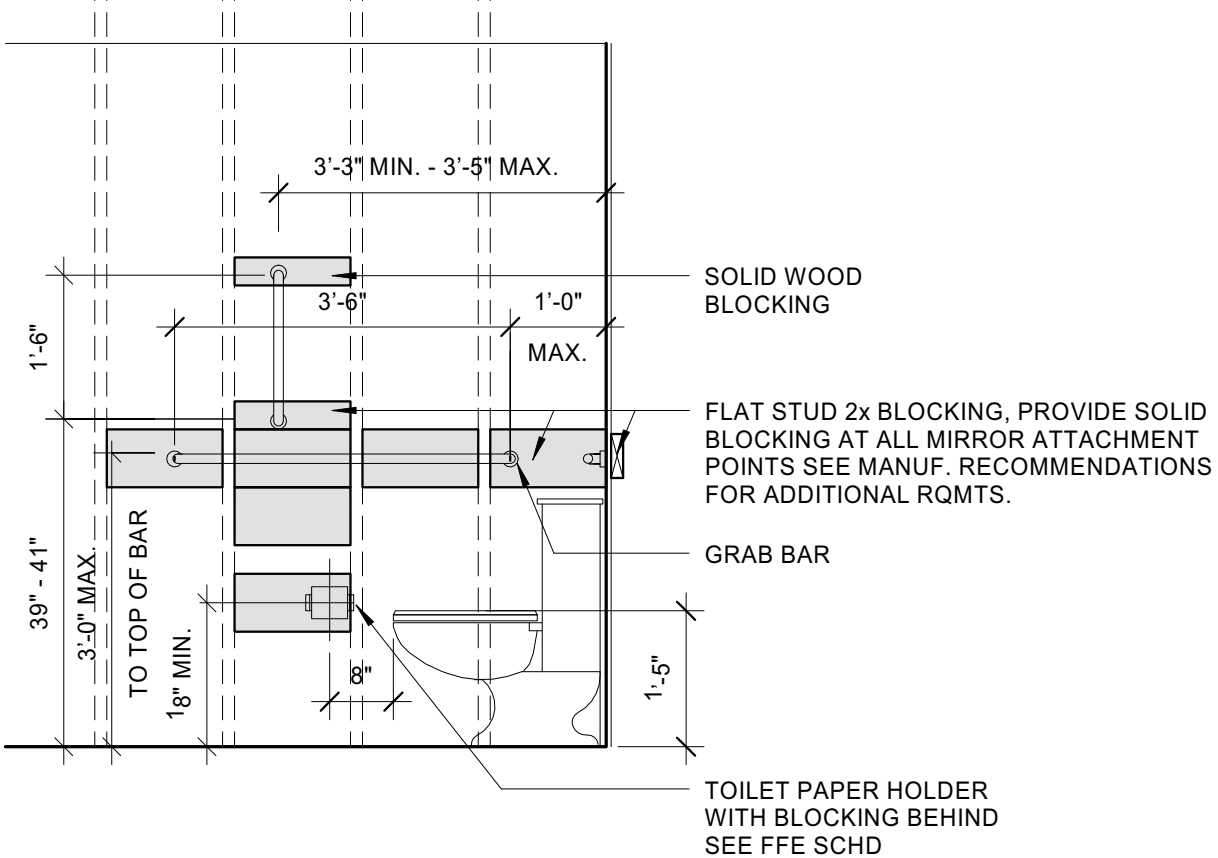
5 | PLAN DETAIL AT DEMISING WALL

1 1/2" = 1'-0"



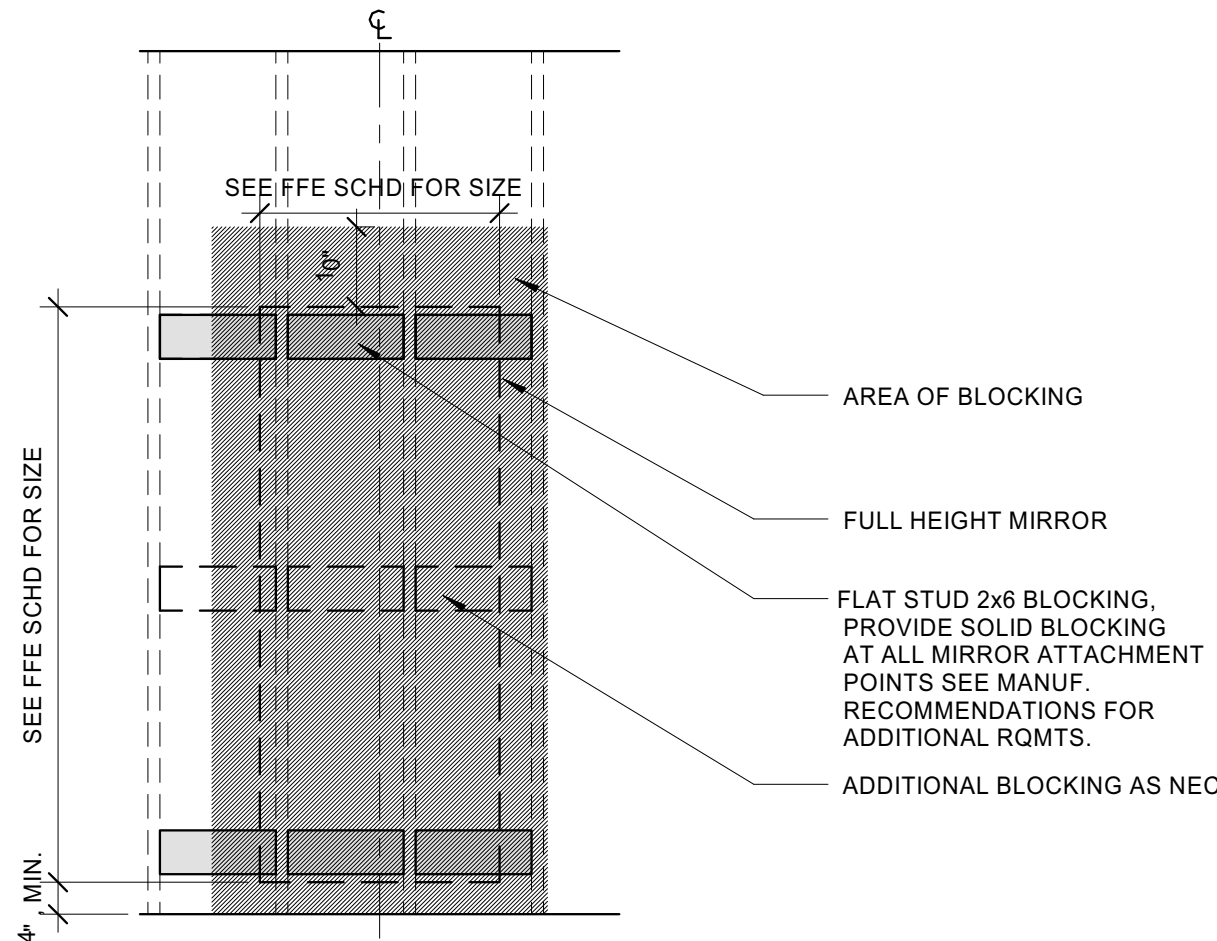
4 | BLOCKING DETAIL - VANITY MIRROR

1/2" = 1'-0"



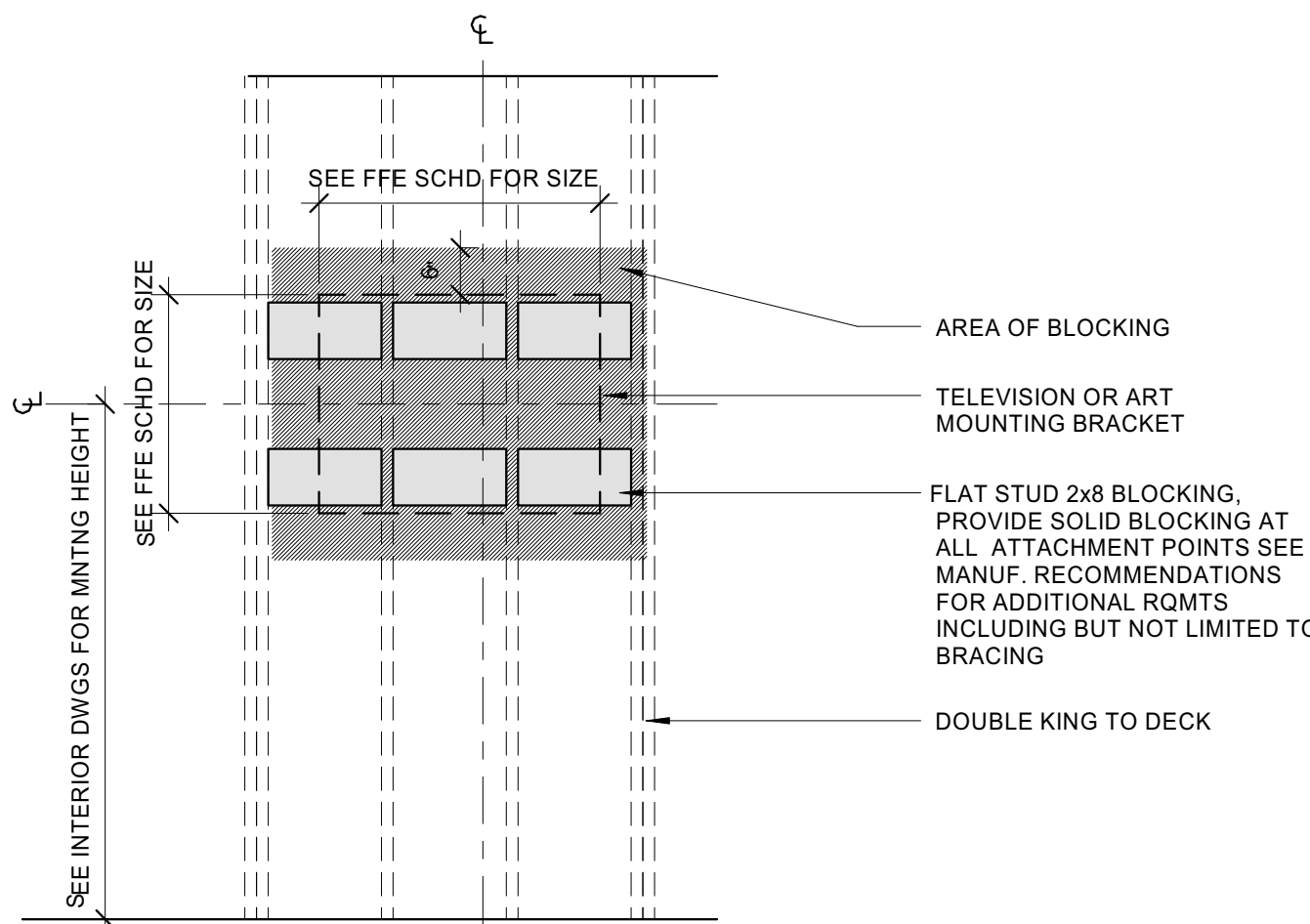
3 | BLOCKING DETAIL - TOILET

1/2" = 1'-0"



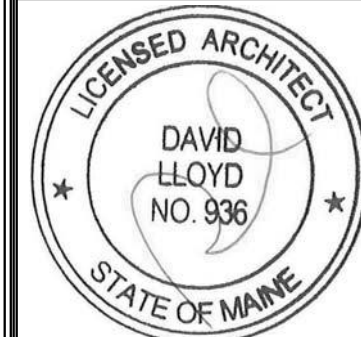
2 | BLOCKING DETAIL - FULL HEIGHT MIRROR

1/2" = 1'-0"



1 | BLOCKING DETAIL - WALL MOUNTED TV

1/2" = 1'-0"



Prepared For:

118 on Munjoy Hill, LLC

118 CONGRESS STREET
PORTLAND, ME 04101

Consultant:

Architect:

ARCHETYPE
architects

48 Union Wharf Portland, Maine 04101
(207) 772-6022 Fax (207) 772-4056

Project:

118 ON MUNJOY HILL

118 CONGRESS STREET
PORTLAND, MAINE

Revisions:

Scale:

As indicated

Date:

07 MAR 2014

INTERIOR DETAILS

A4.06